

INSTRUCTIONS

Field Adjustable Performance Downlight

WESTGATE

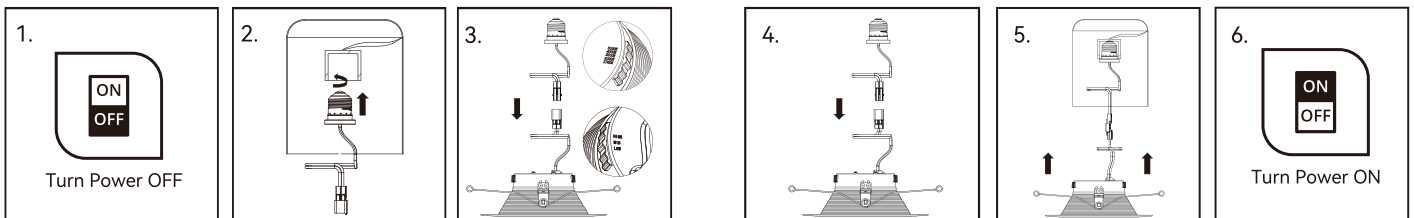
IMPORTANT

READ CAREFULLY BEFORE INSTALLING FIXTURE. RETAIN THESE INSTRUCTIONS FOR FUTURE REFERENCE.

- This fixtures must be wired in accordance with the National Electrical Code and all applicable local codes. Proper grounding is required for safety.
- THIS PRODUCT MUST BE INSTALLED IN ACCORDANCE WITH THE APPLICABLE INSTALLATION CODE BY A PERSON FAMILIAR WITH THE CONSTRUCTION AND OPERATION OF THE PRODUCT AND THE HAZARDS INVOLVED.
- This luminaire has been modified to operate LED lamps. Do not attempt to install or operate fluorescent lamps in this luminaire.

WARNING:

- Risk of fire or electric shock. LED Retrofit Kit installation requires knowledge of luminaires electrical systems. If not qualified, do not attempt installation. Contact a qualified electrician.
- Risk of fire or electric shock. Install this kit only in luminaires that have the construction features and dimensions shown in the photographs and/or drawings and where the input rating of the retrofit kit does not exceed the input rating of the luminaire.
- To prevent wiring damage or abrasion, do not expose wiring to edges of sheet metal or other sharp objects.
- Do not make or alter any open holes in an enclosure of wiring or electrical components during kit installation.
- THE RETROFIT KIT IS ACCEPTED AS A COMPONENT OF A LUMINAIRE WHERE THE SUITABILITY OF THE COMBINATION SHALL BE DETERMINED BY CSA OR AUTHORITIES HAVING JURISDICTION.



1. Turn off circuit breaker that provides power to the light switch for the recessed lights.
2. Thread the Socket Adapter into the socket.
3. Toggle the switch to the specified color temperature.

4. Plug the female connector of the retrofit trim onto the male connector of the housing.
5. If using torsion springs, squeeze both torsion spring arms together and insert into the torsion spring slots (or c-clips) of the can. Tuck all wires into the can and carefully push the retrofit trim into can (Note: to provide enough room in shallow cans carefully position SOCKET ADAPTER and SOCKET adjacent to the side of the LED DRIVER prior to inserting the RETROFIT TRIM into the CAN).
6. Turn on circuit breaker and test light.